

**MASON MAP SERVICE, INC.**

**LONG LAKE (Rodessa 8600)  
& (Pettet 9300)**

**FIELD STUDY  
ANDERSON COUNTY**

ESTIMATED ORIGINAL GAS IN PLACE AND RECOVERABLE GAS  
LONG LAKE (PETTET 9300) FIELD  
ANDERSON COUNTY, TEXAS

DATA:

POROSITY =  $\phi$  = 13%

WATER SATURATION =  $S_w$  = 23%

GAS FORMATION VOLUME FACTOR =  $B_{gi}$  = 245.6 SCF/CU.FT

AVERAGE NET PAY =  $H$  = 15'

ACRES =  $A$  = 320 ACRES

ESTIMATED ORIGINAL GAS IN PLACE:

43,560 ( $\phi$ ) (1- $S_w$ ) ( $A$ ) ( $H$ ) ( $B_{gi}$ )  $10^{-3}$

43,560 (.13) (1-.23) (320) (15) (245.6)  $10^{-3}$

8,140,336 MSCF

ESTIMATED RECOVERABLE GAS:

(ORIGINAL GAS IN PLACE) (RECOVERY FACTOR)

(8,140,336 MSCF) (.90)

4,626,302 MSCF

EXHIBIT NO: 5

OPERATOR: BEN J. FORTSON

DECKET NO: 6-89,044

DATE: NOVEMBER 12, 1986

# LONG LAKE (Rodessa 8600)

**LOCATION:** 11 miles SW of Palestine, Texas Anderson County.

**GAS DISCOVERY:** Home Petr. Corp. #1-U Joseph Munnig,  
Sanchez Survey, A-60. Comp. 8-5-66. IP CAOF  
5917 MCF/r gas, gvy 603 deg, 5 WHP 5700. TD.  
10,843', FBU 10,001'. Top of pay 8586'. Flow.  
226 DF.

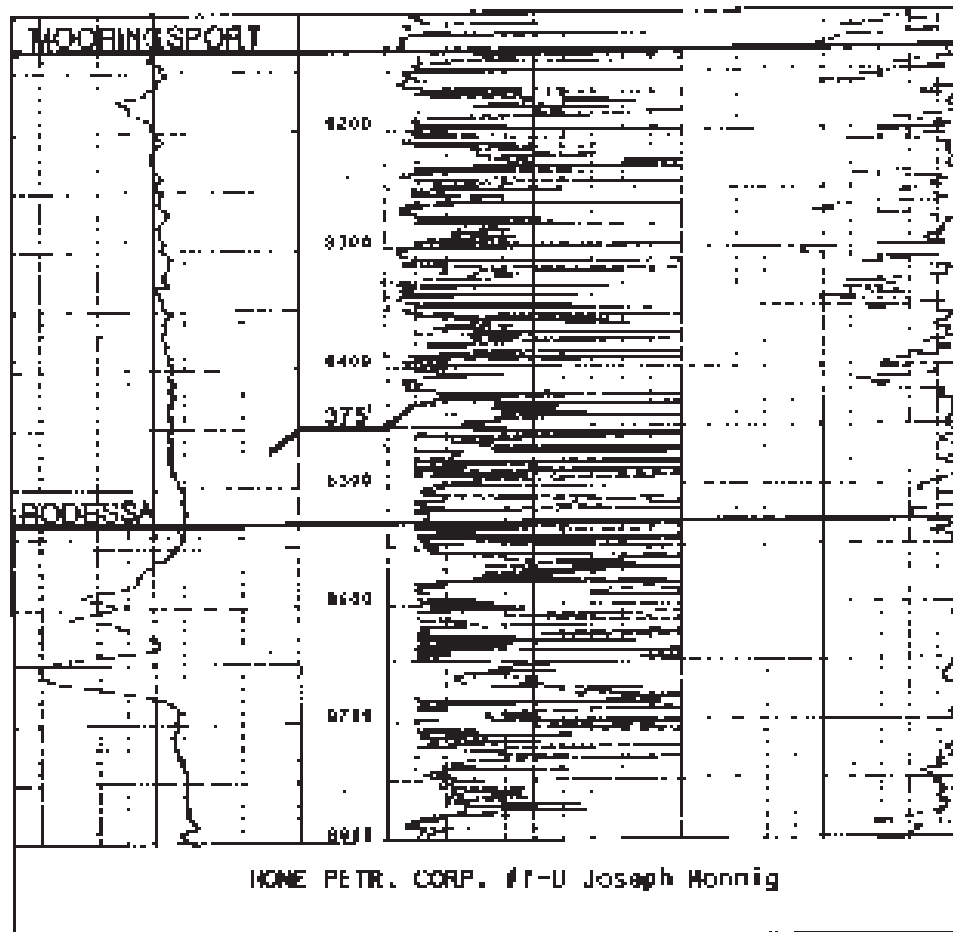
**NET PAY:** 35 ft.

**PRODUCING INTERVAL:** 8586' - 8592'; 8625' - 8610';  
8627' - 8624'; 8644' - 8656'.

**HOLES:** 8532 Rodessa, 9224 Pettet, 9625' Travis  
Peak.

**NOTE:** Was completion with discovery well for Long  
Lake (Pettet 9300).

**FIELD RULES:** Spacing of 1320' from lease lines and  
2640' between wells completed on the same tract.  
Gas production units of 320 ac. with a 10% tol-  
erance and a maximum diameter of 6000 feet.  
Based on 100% average. Rules made permanent  
8-7-66.



HDFP PETRO FLM CORP. MONASIS #1. LONG LAKE (PETRO D350)

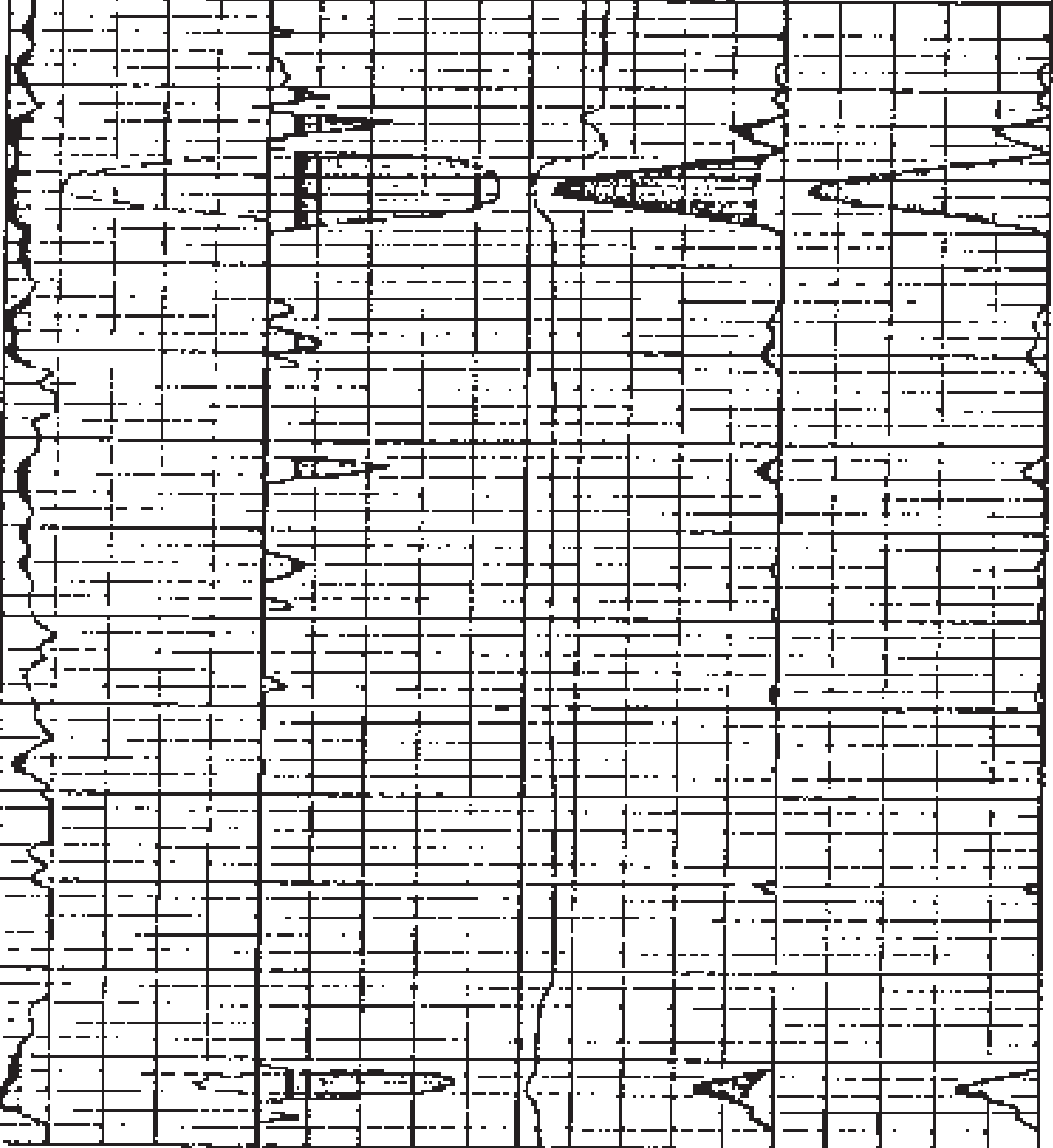
0"=100'

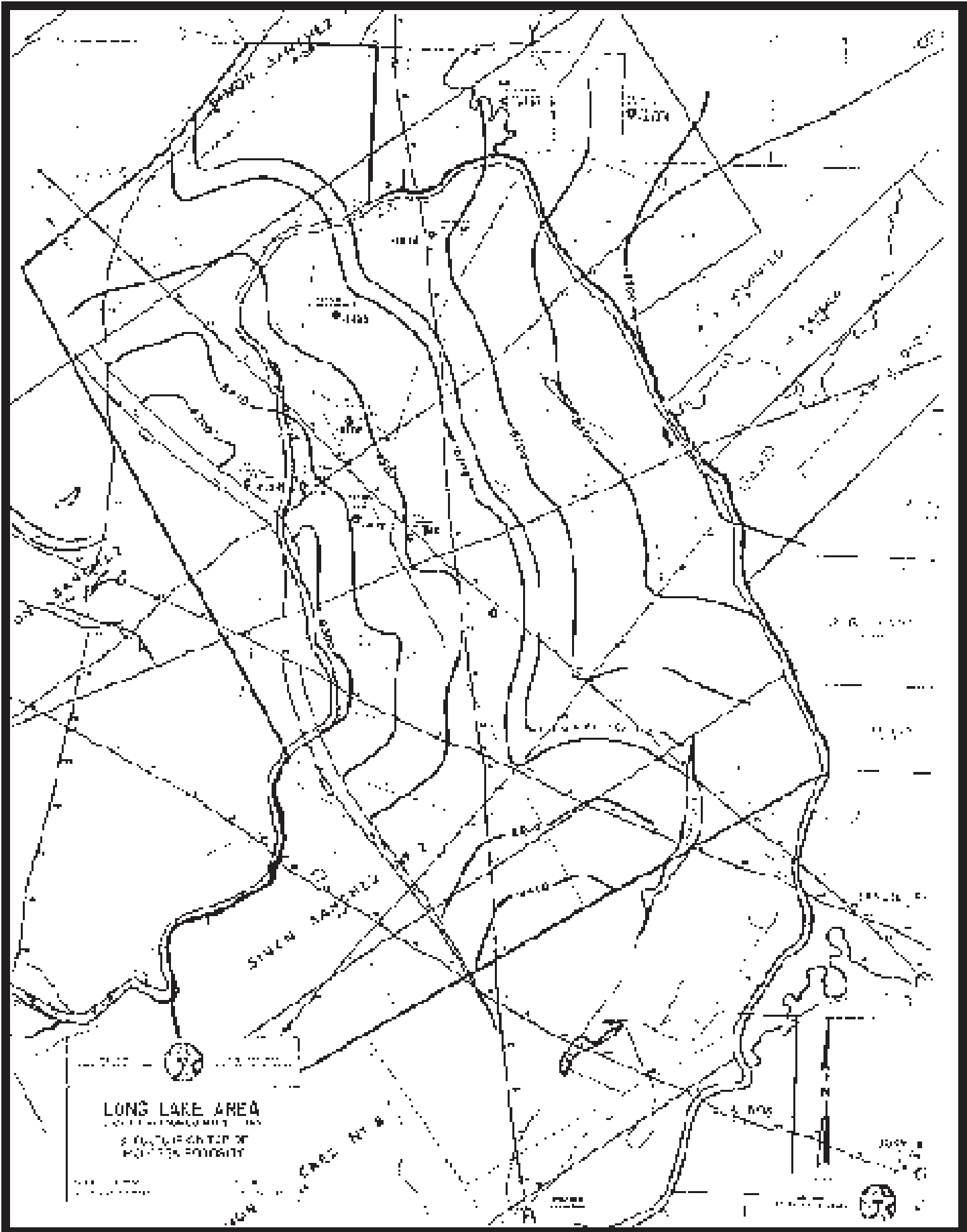
0	0000 PERH (GAL)	1500	EN (%)	0 25	PT 12 (G)	0 25	PHIE (G)	0
0	VSH (G)	500		25	GVN (G)	0		
0				0	DCAL (INCH)	10		

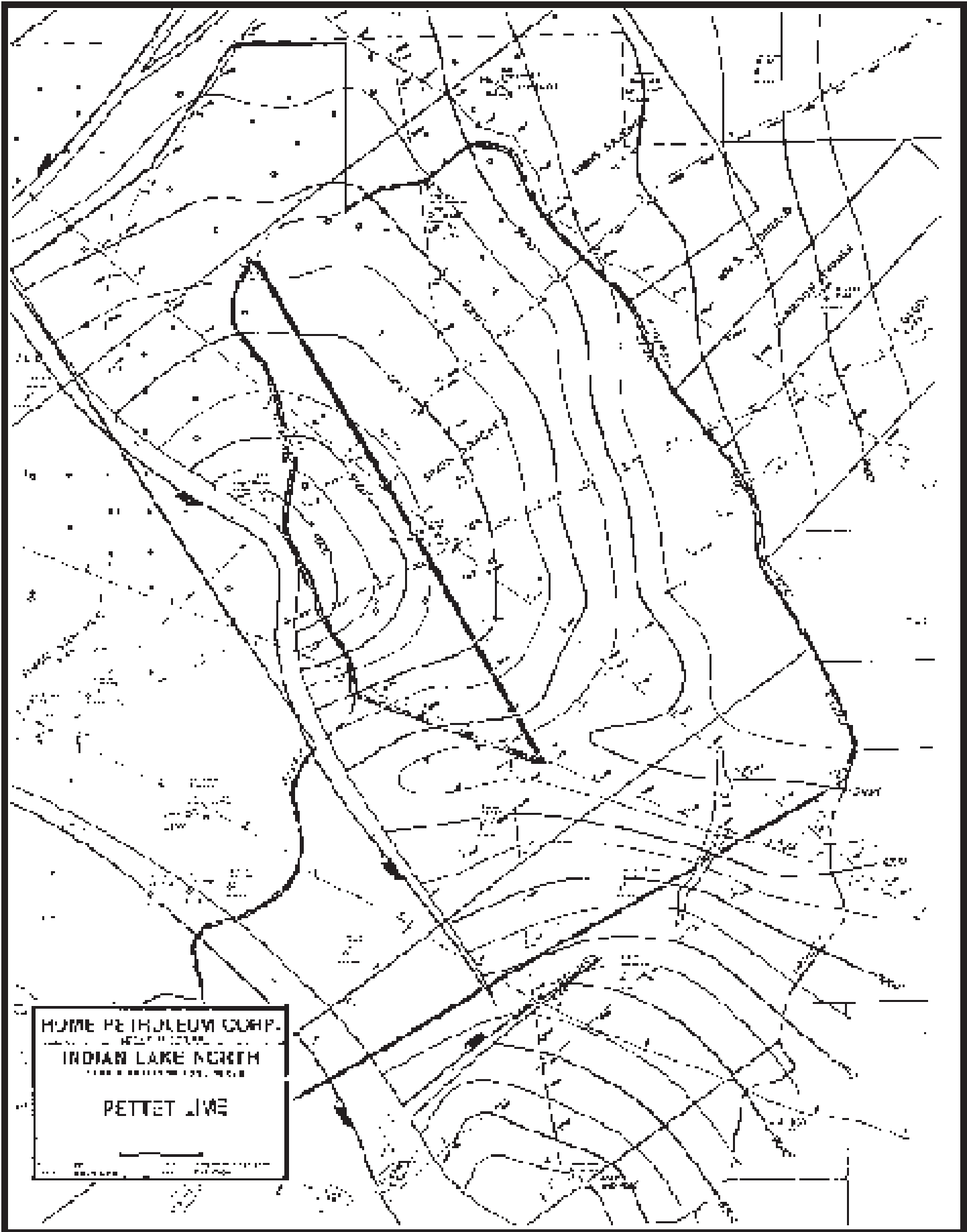
9300

9350

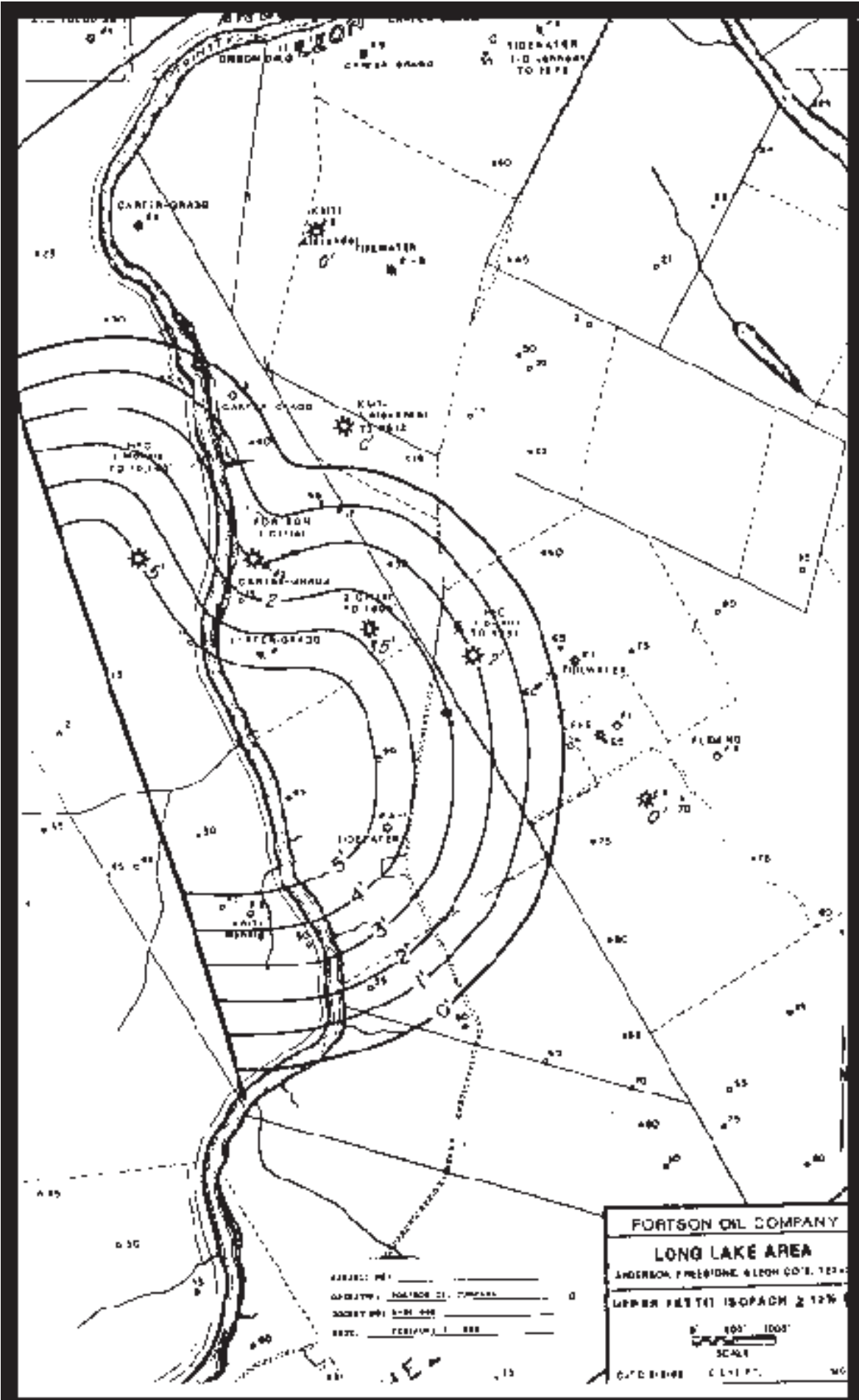
9400







HOME PETROLEUM CORP.  
INDIAN LAKE NORTH  
PETTET LINE



FORTSON OIL COMPANY  
 LONG LAKE AREA  
 ANDERSON PRESIDENCE & LEON CO.'S 122-  
 UPPER FET 11 ISOPACH 2 12%  
 SCALE  
 1" = 100' 1000'

DATE: \_\_\_\_\_  
 DRAWN BY: \_\_\_\_\_  
 CHECKED BY: \_\_\_\_\_  
 SCALE: \_\_\_\_\_